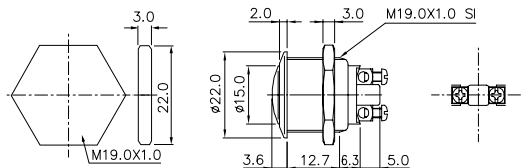


SPECIFICATION



RATING:	8A 125VAC , 4A 250VAC, 15mA/36VDC
CIRCUIT:	ON OFF / (ON) - OFF
INSULATION RESISTANCE:	DC 500V 100M OR MORE
CONTACT RESISTANCE:	DC 2-4V 1A 100m OR LESS
WITHSTAND VOLTAGE:	AC 1500V FOR 1 Min
AMBIENT TEMPERATURE:	-30 °C TO 70 °C
Mounting hole size:	Ø12/16/19/22mm
Degree of protection:	IP65 / IP67

SIZE



NOTE : Screw terminals for wires 1.5mm² MAX.